

First Baptist of Manchester Connecticut

Means of Egress Plan

May 8, 2019

Evaluated by: P. Chen, PE
CFEI, CVFI, ACTAR

Code: 2015 Connecticut Building Code
Chapter: 10 Mean of Egress

TABLE 1006.2.1
SPACES WITH ONE EXIT OR EXIT ACCESS DOORWAY

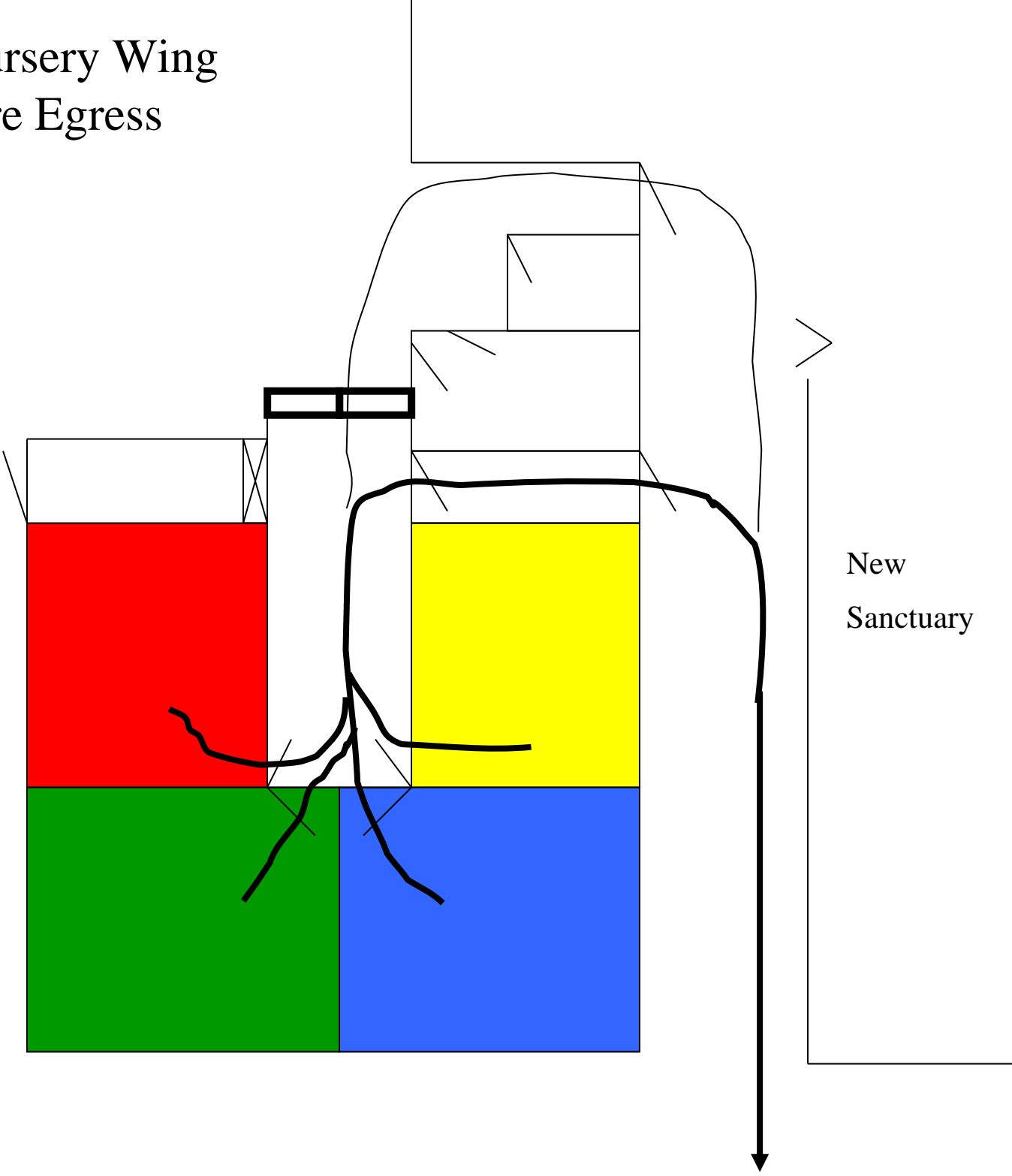
OCCUPANCY	MAXIMUM OCCUPANT LOAD OF SPACE	MAXIMUM COMMON PATH OF EGRESS TRAVEL DISTANCE (feet)		
		Without Sprinkler System (feet)		With Sprinkler System (feet)
		Occupant Load		
		OL ≤ 30	OL > 30	
A ^c , E, M	49	75	75	75 ^a
B	49	100	75	100 ^a
F	49	75	75	100 ^a

Exit Discharge Meeting Locations



- A = Hillstown Road Side
- B = Woodside Road Side
- C = West or Across Field
- D = North or Across Parking Lot
- Dumpster = Dumpsters

Nursery Wing Fire Egress



New
Sanctuary

Meet at Lightpole
"B"



= Fire Door



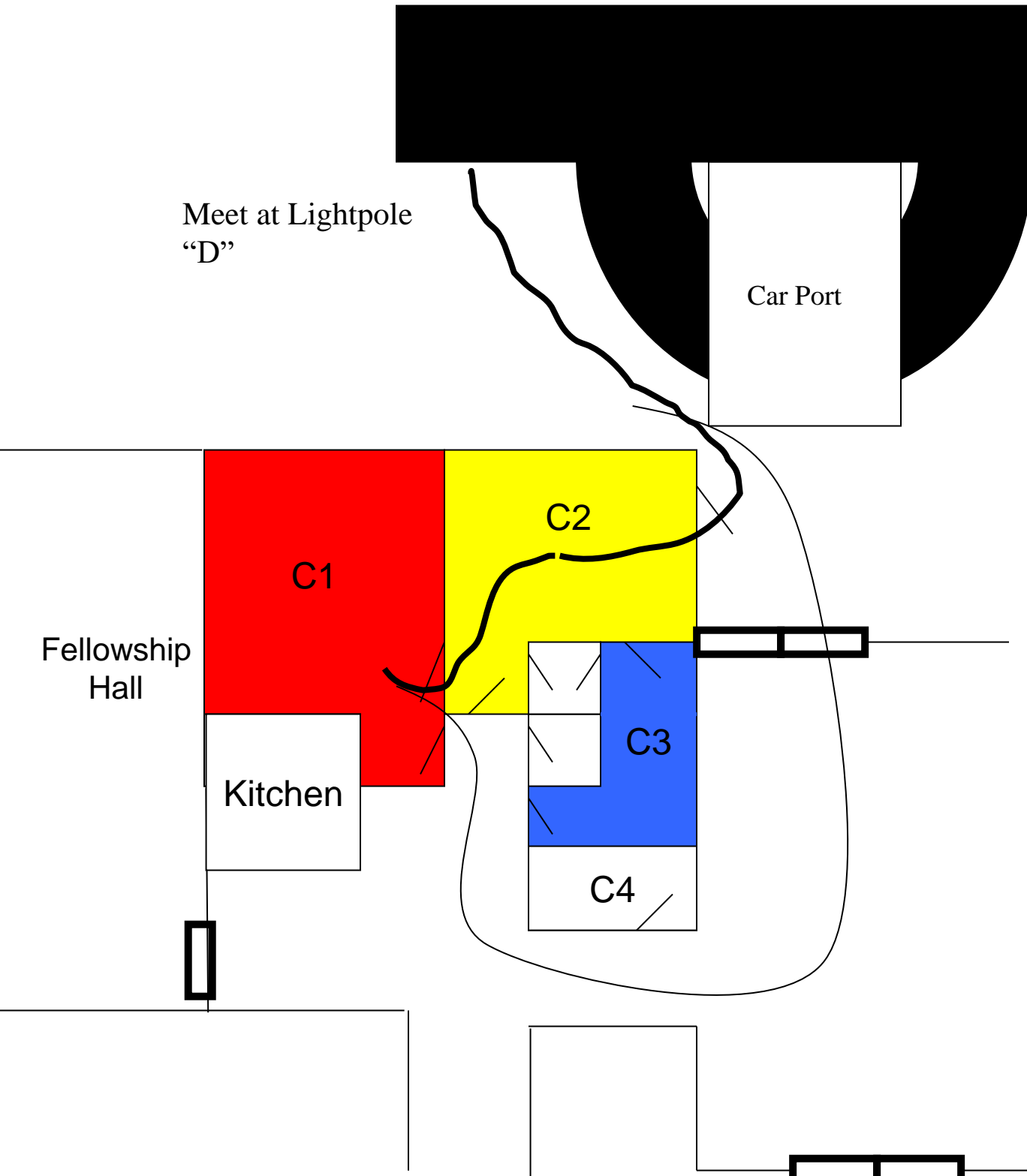
= Primary Route



= Locked Door



= Secondary Route



Meet at Lightpole
"D"

Car Port

C1

C2

Fellowship
Hall

Kitchen

C3

C4



= Main Bldg. Door



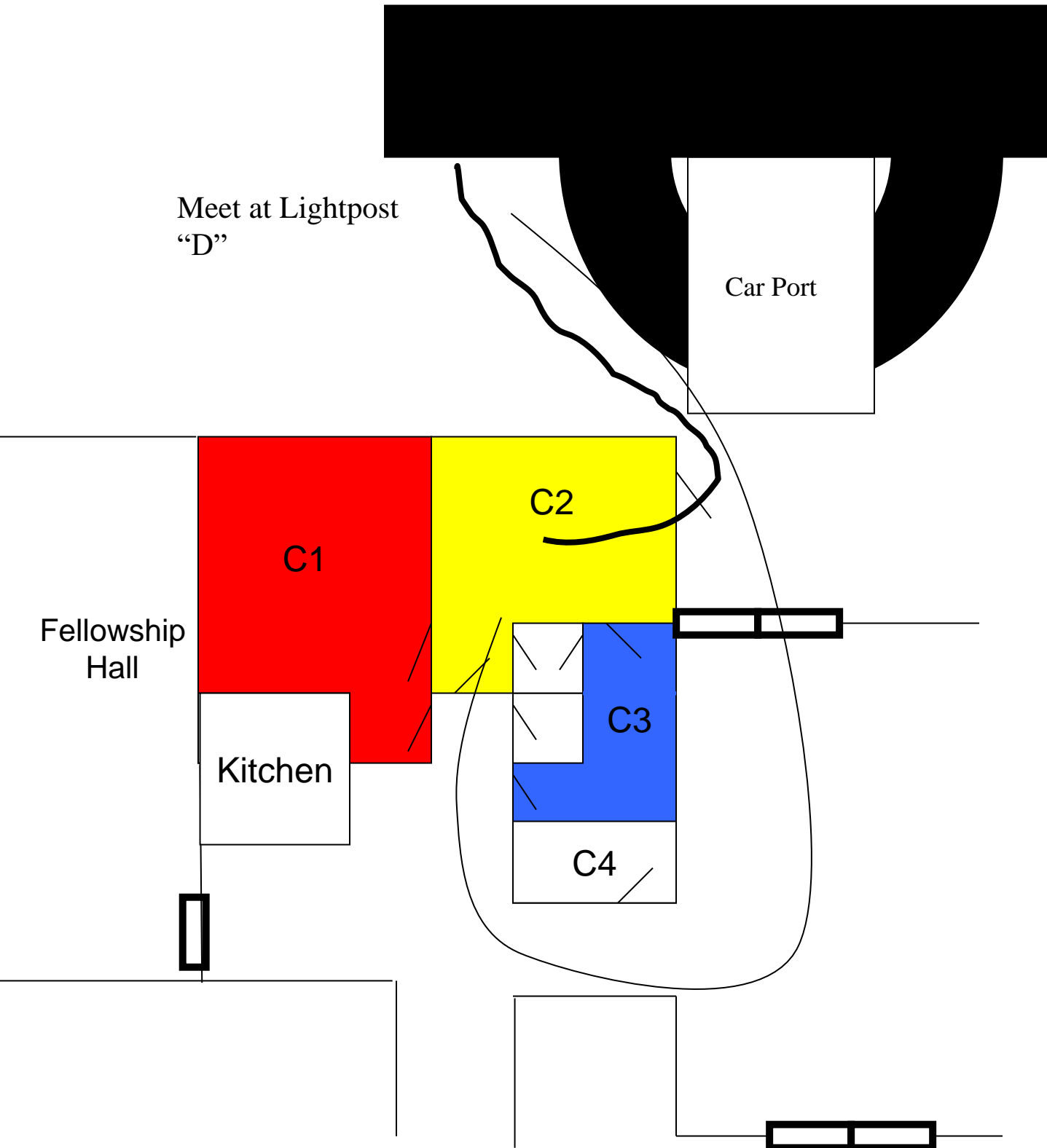
= Primary Route



= Fire Door



= Secondary Route



= Main Bldg. Door



= Primary Route



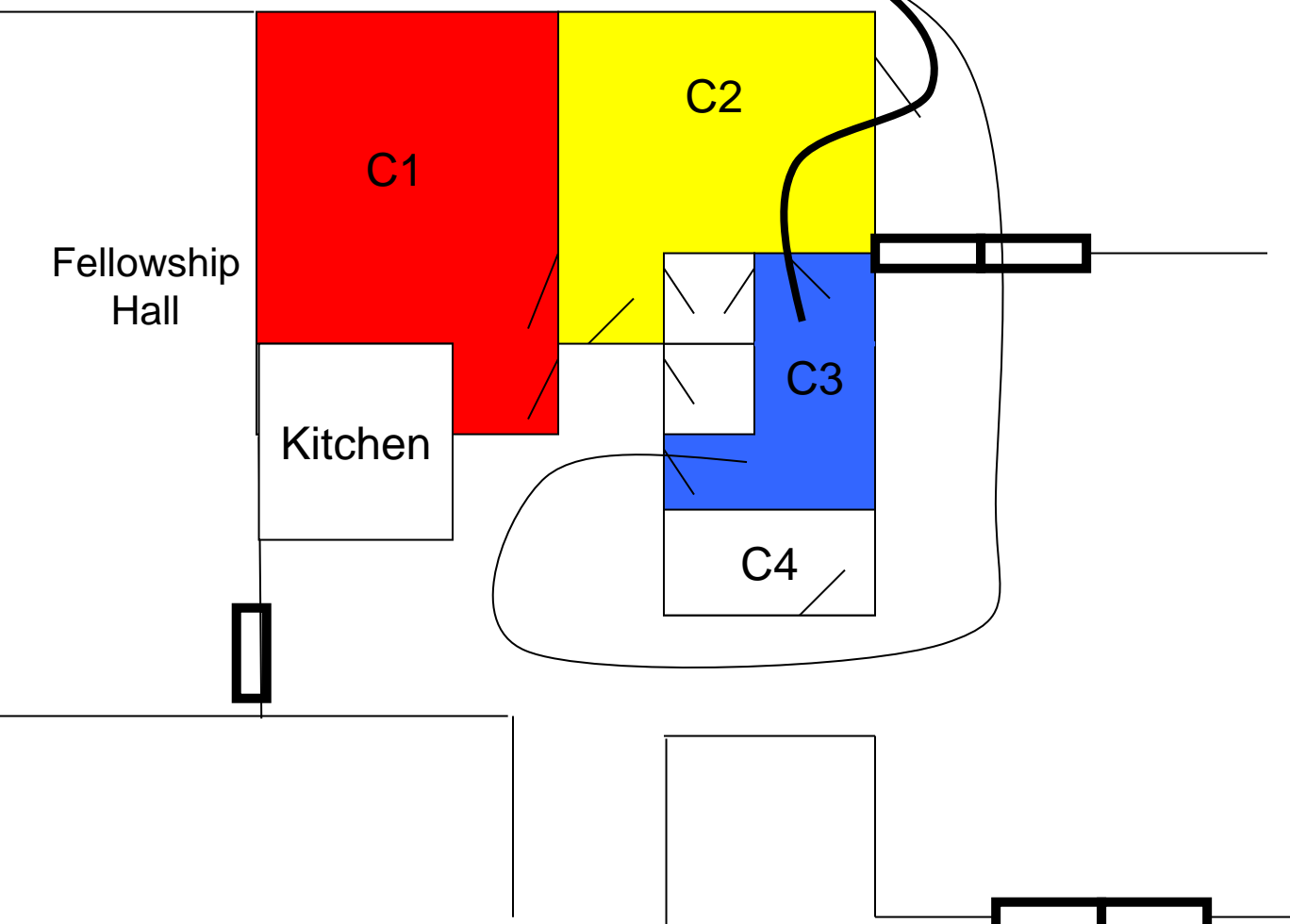
= Fire Door



= Secondary Route

Meet at Lightpost
"D"

Car Port



= Main Bldg. Door



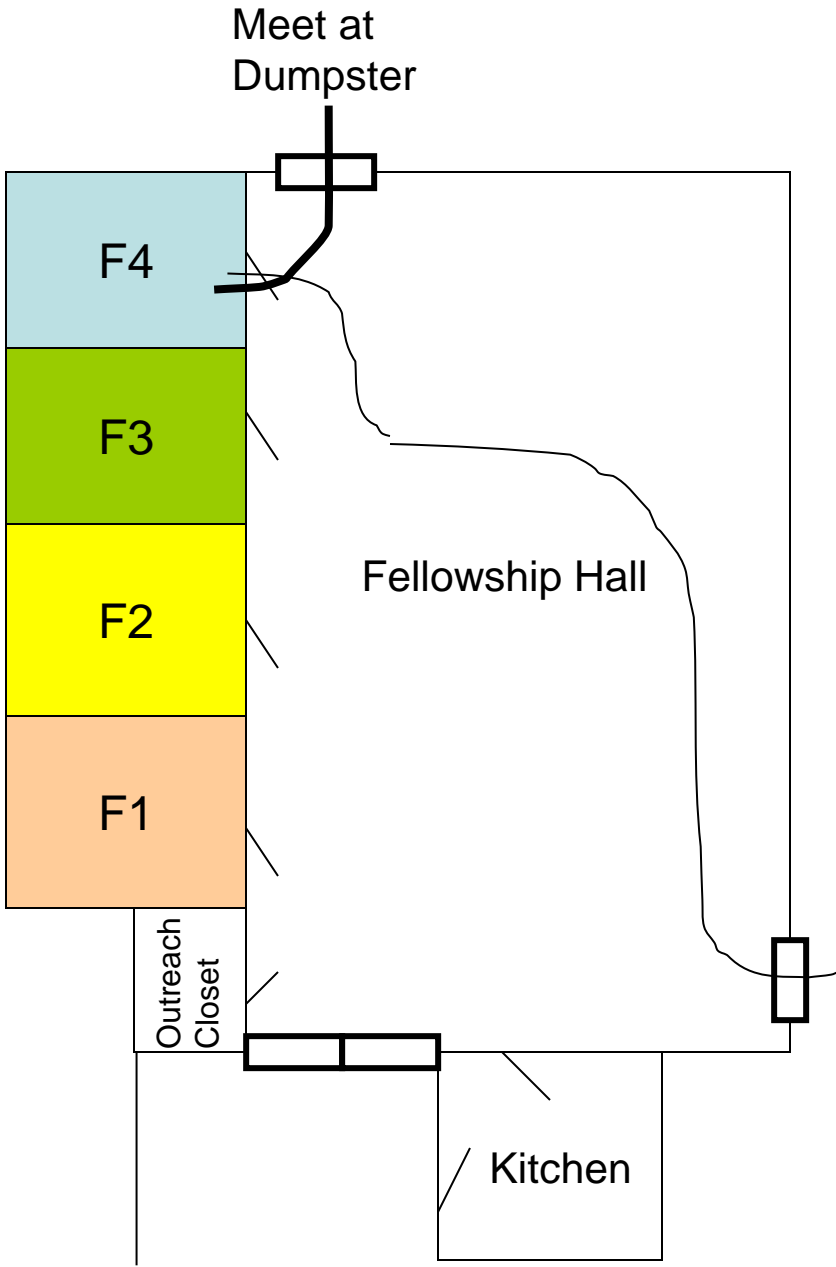
= Primary Route



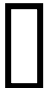
= Fire Door





= Secondary Route

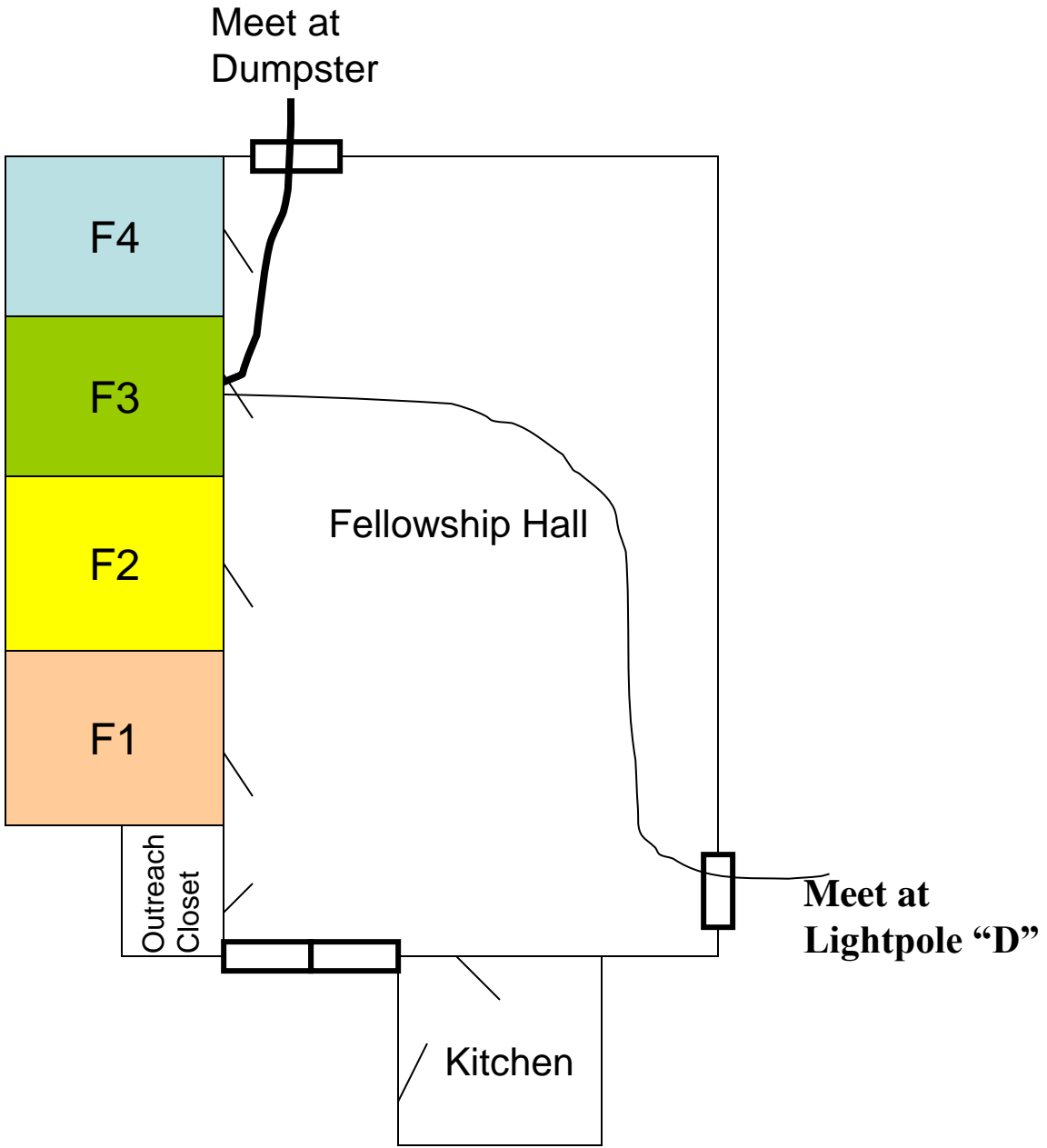



Meet at Lightpole "D"

 =Primary Exit Doors


 = Primary Route

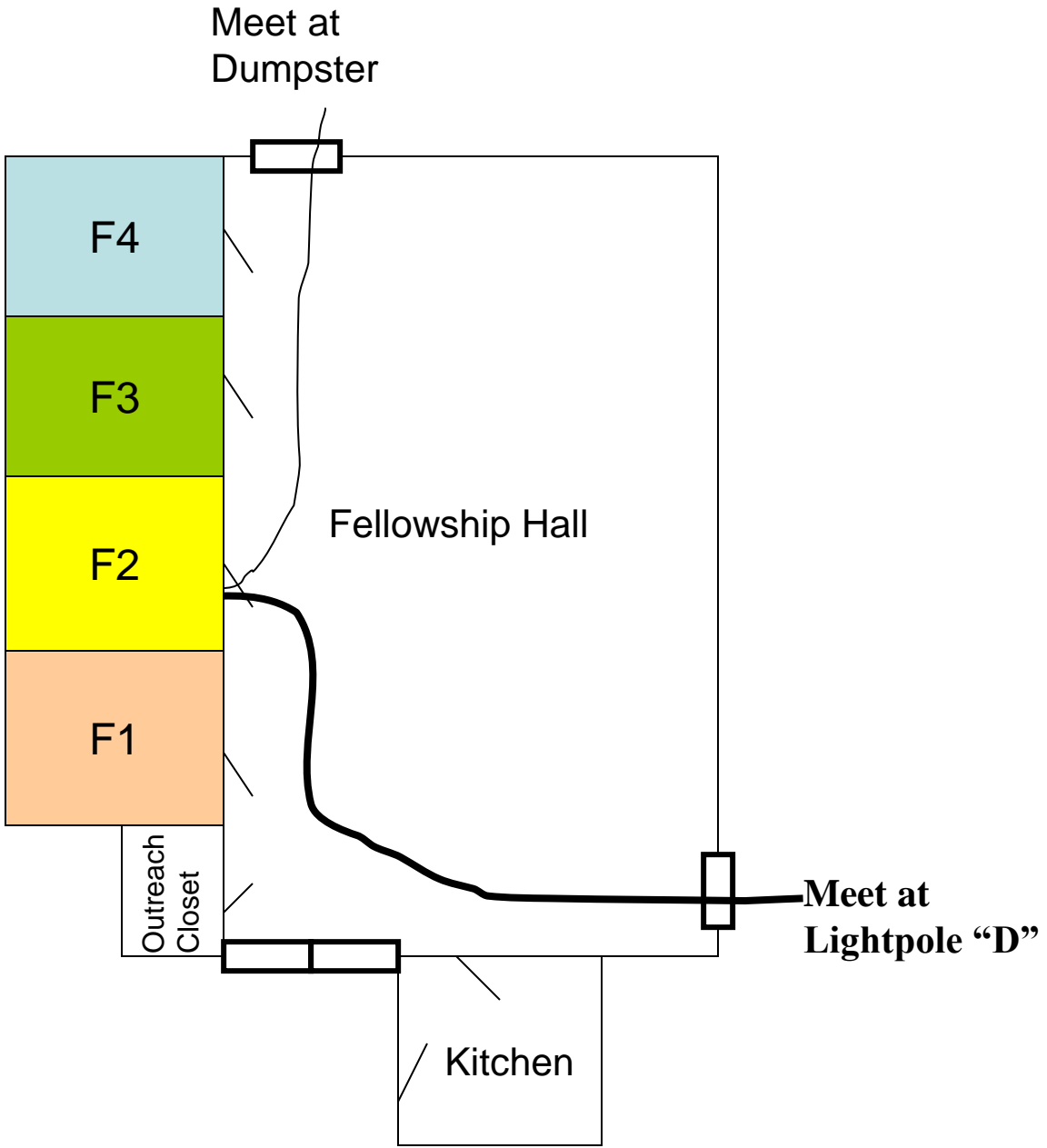
 = Secondary Route





 =Primary Exit Doors


 = Primary Route

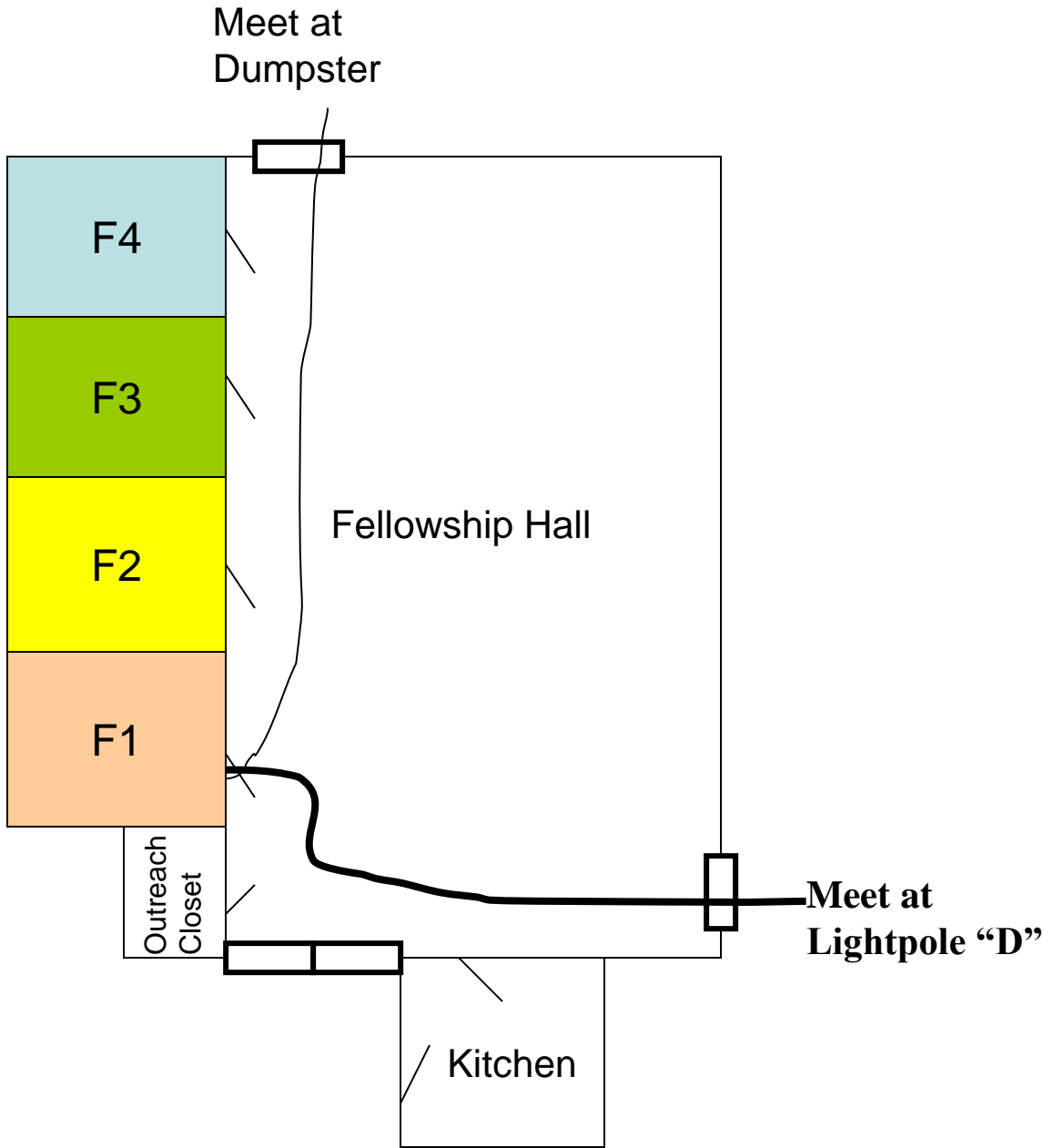
 = Secondary Route



 =Primary Exit Doors

 = Primary Route

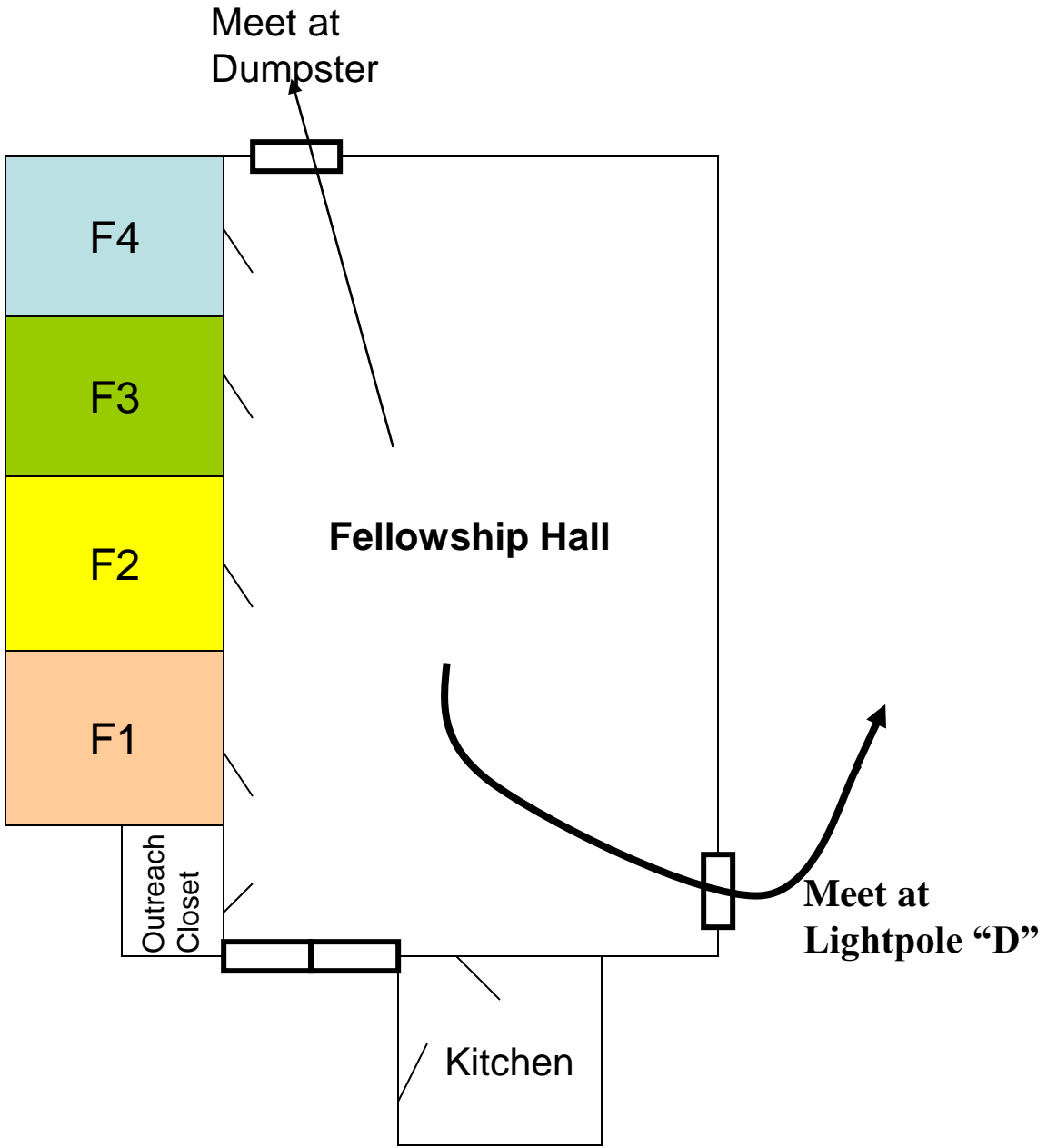
 = Secondary Route




▭ = Primary Exit Doors


▬ = Primary Route

| = Secondary Route



 =Primary Exit Doors

 = Primary Route

 = Secondary Route

Dumpster

**Meet at
Lightpole "D"**

Old Nursery Wing
(Not Shown)

Kitchen

C4

Fellowship
Hall

C5

C6

C7

C8

C9

C10

C11
(SS Office)



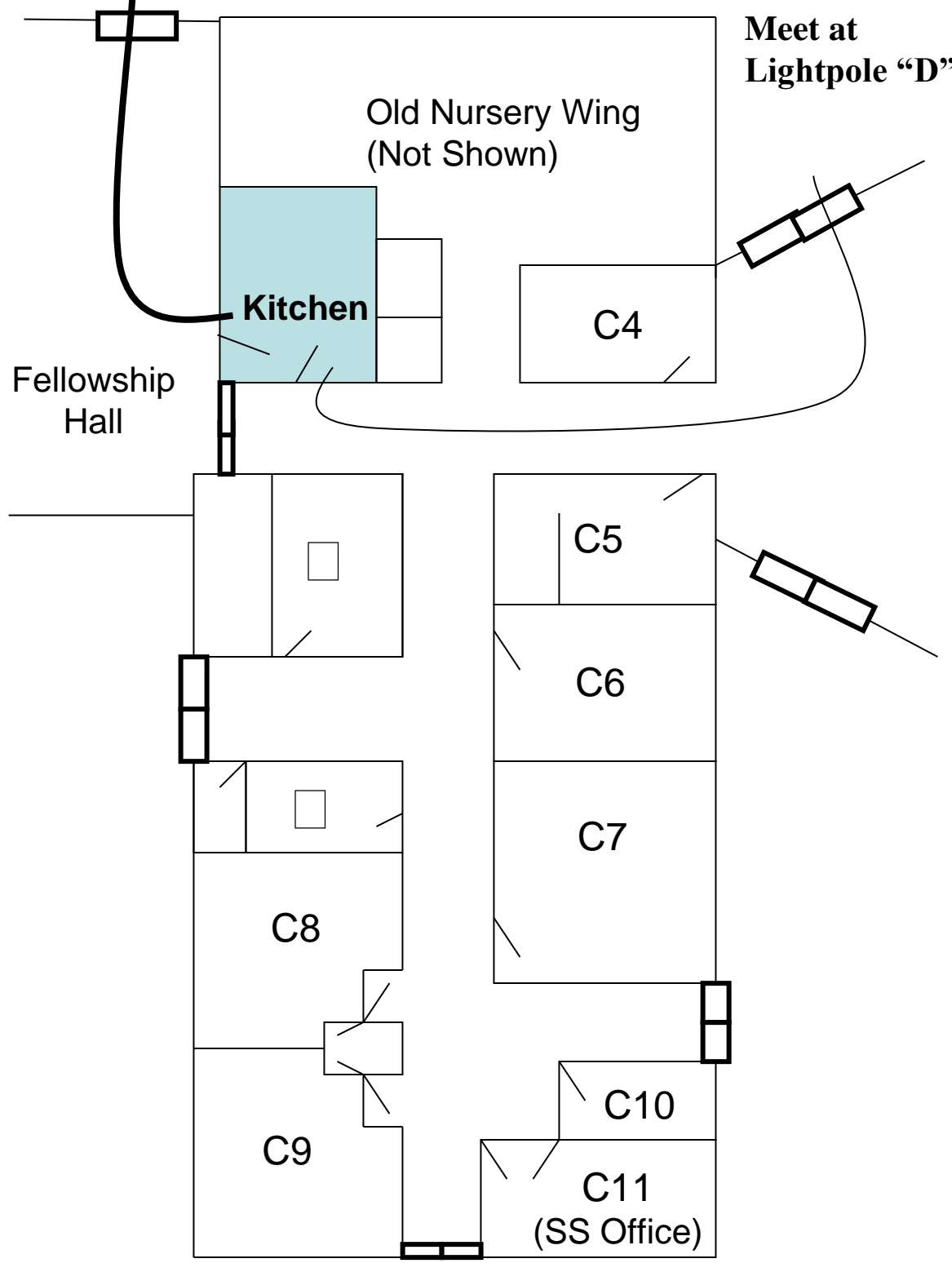
=Primary Exit Doors

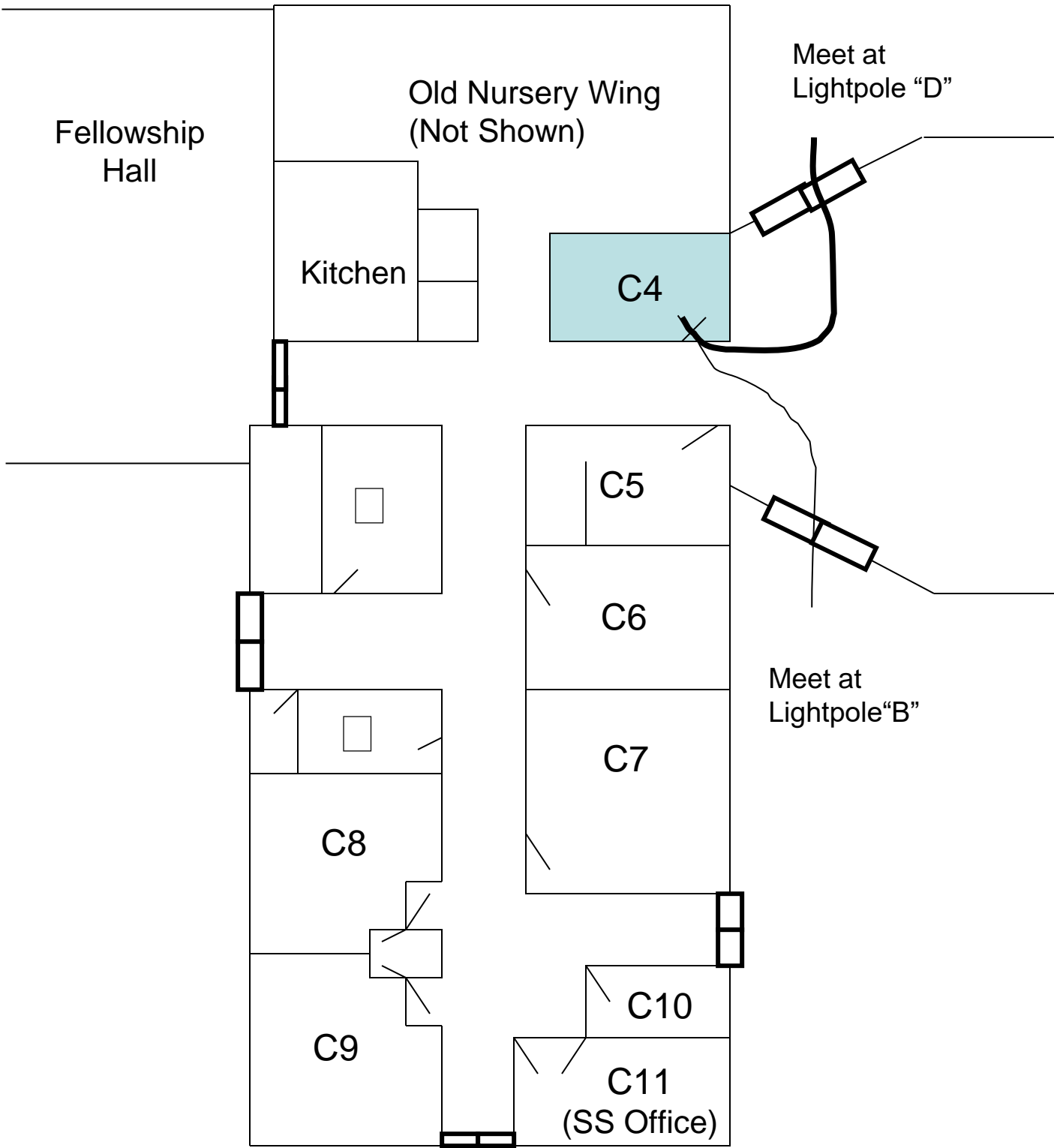


= Primary Route



= Secondary Route





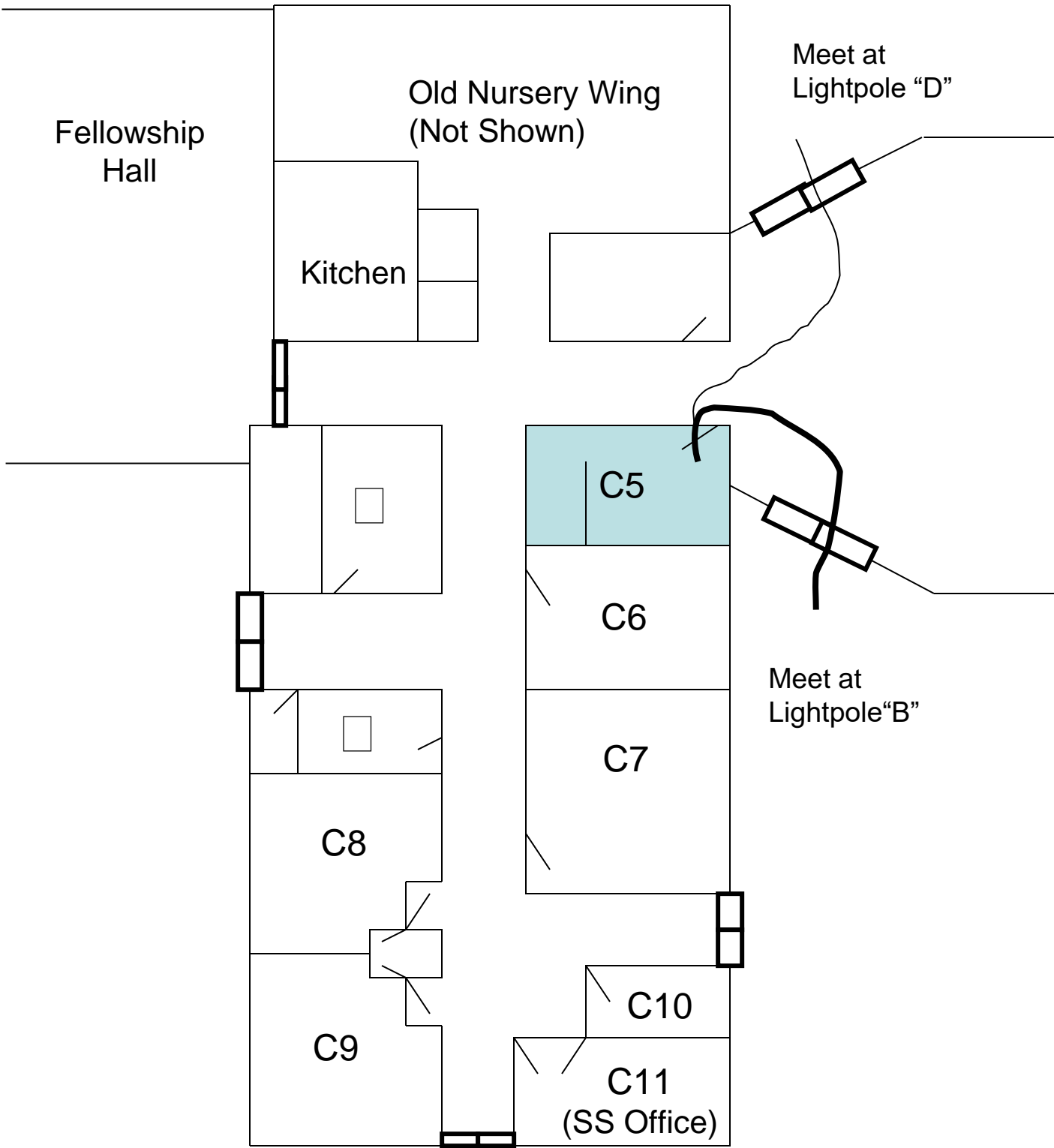
=Primary Exit Doors



= Primary Route



= Secondary Route



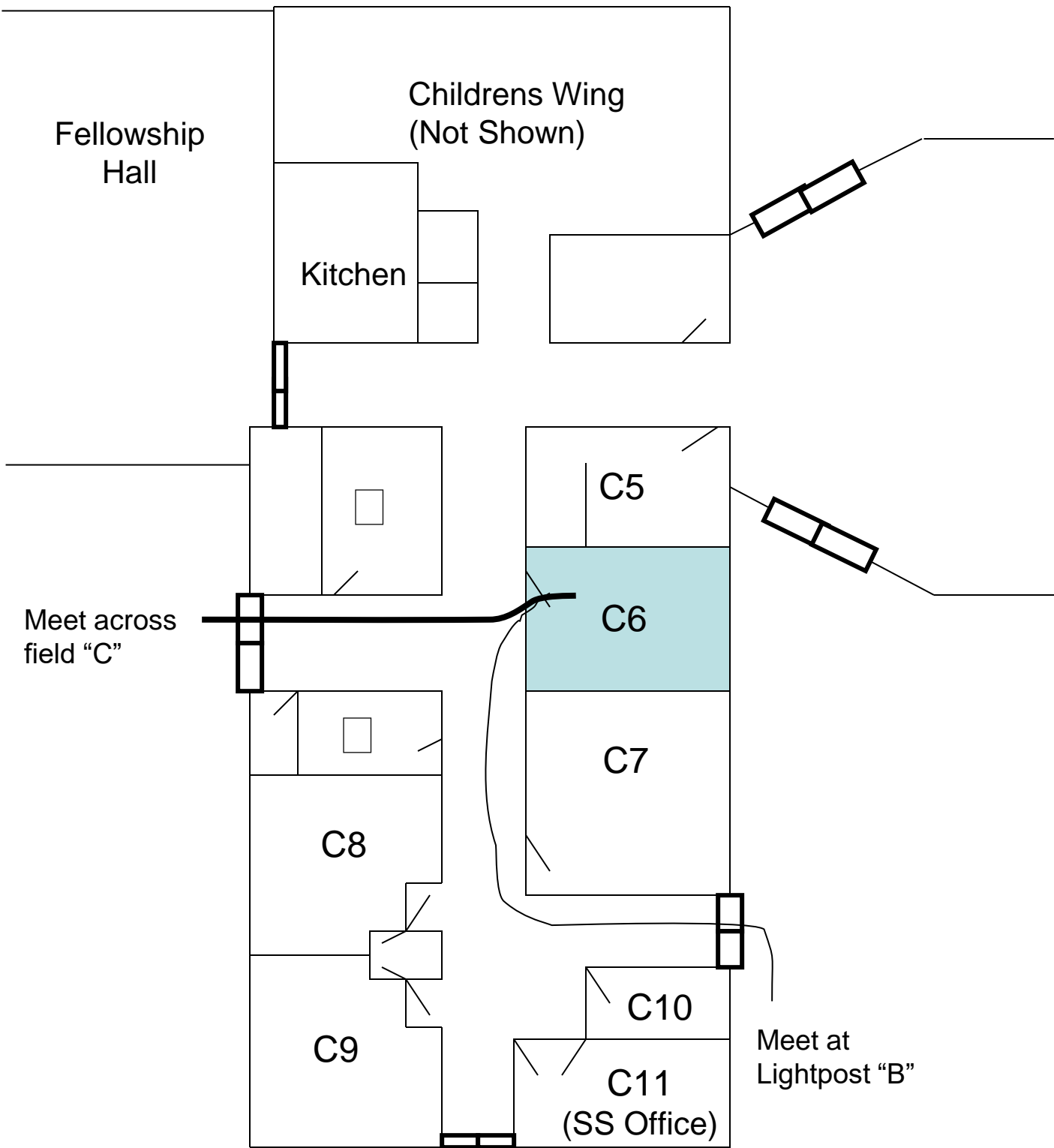
=Primary Exit Doors



= Primary Route



= Secondary Route



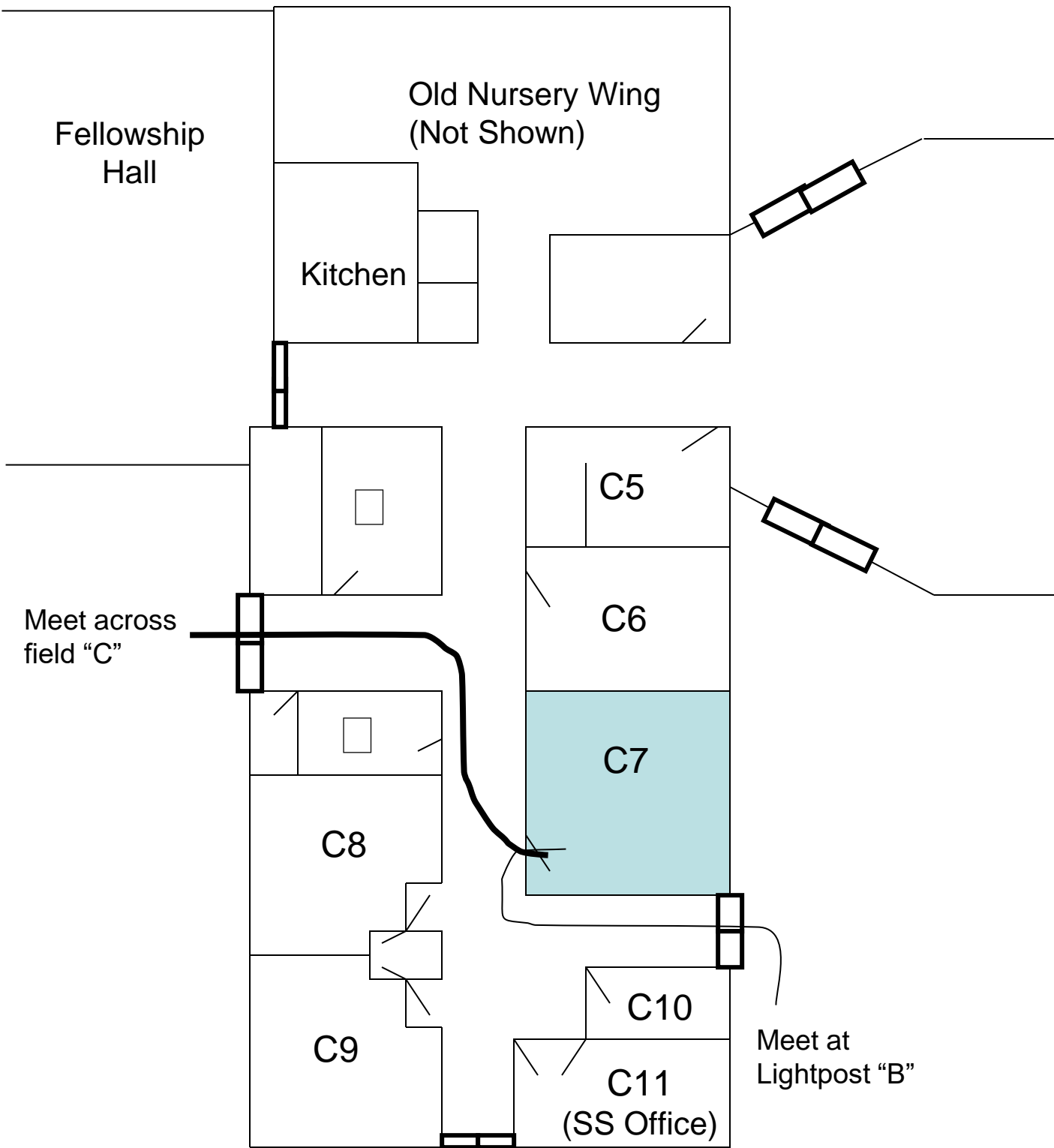
=Primary Exit Doors




= Primary Route




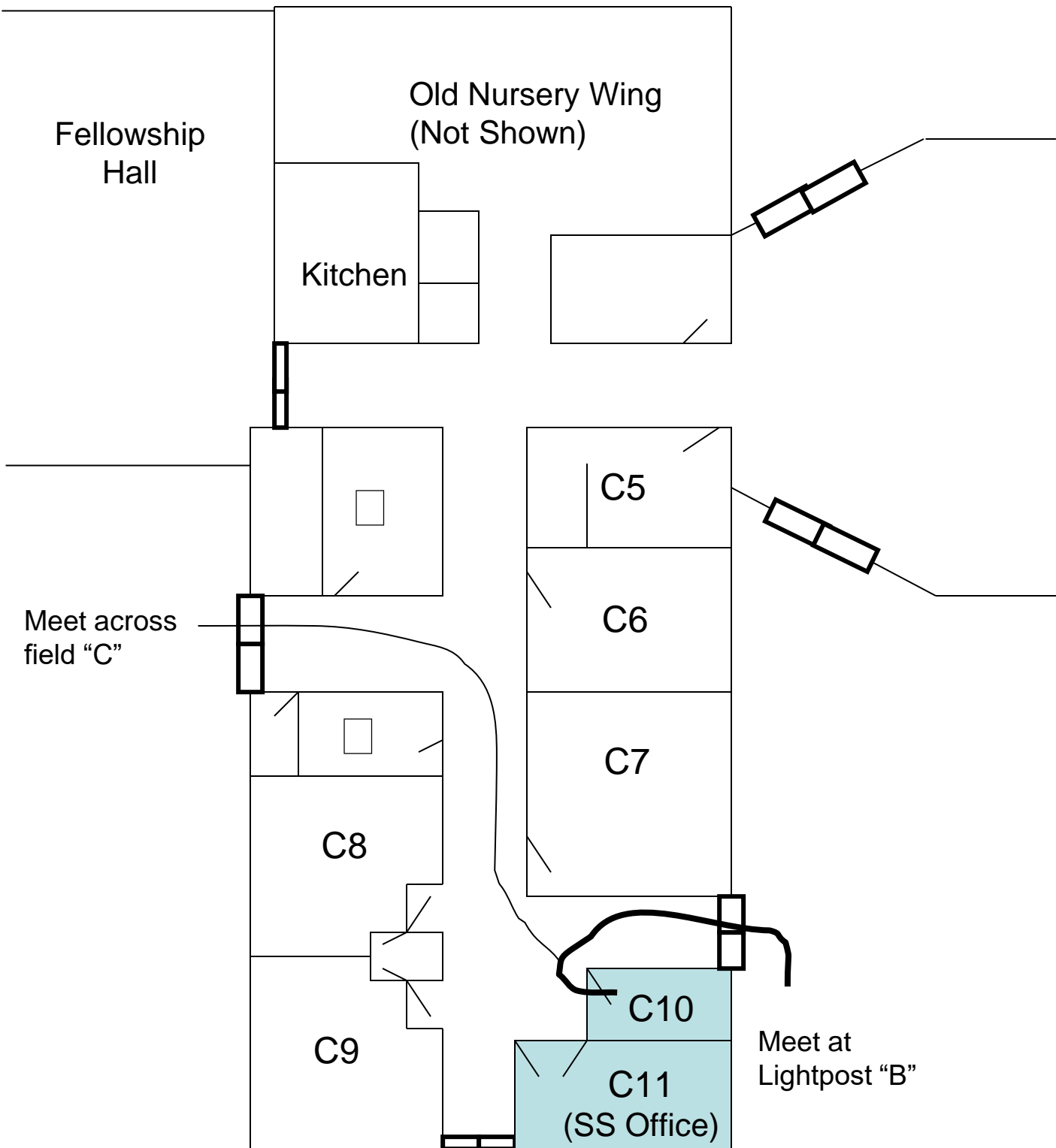
= Secondary Route



 =Primary Exit Doors

 = Primary Route

 = Secondary Route



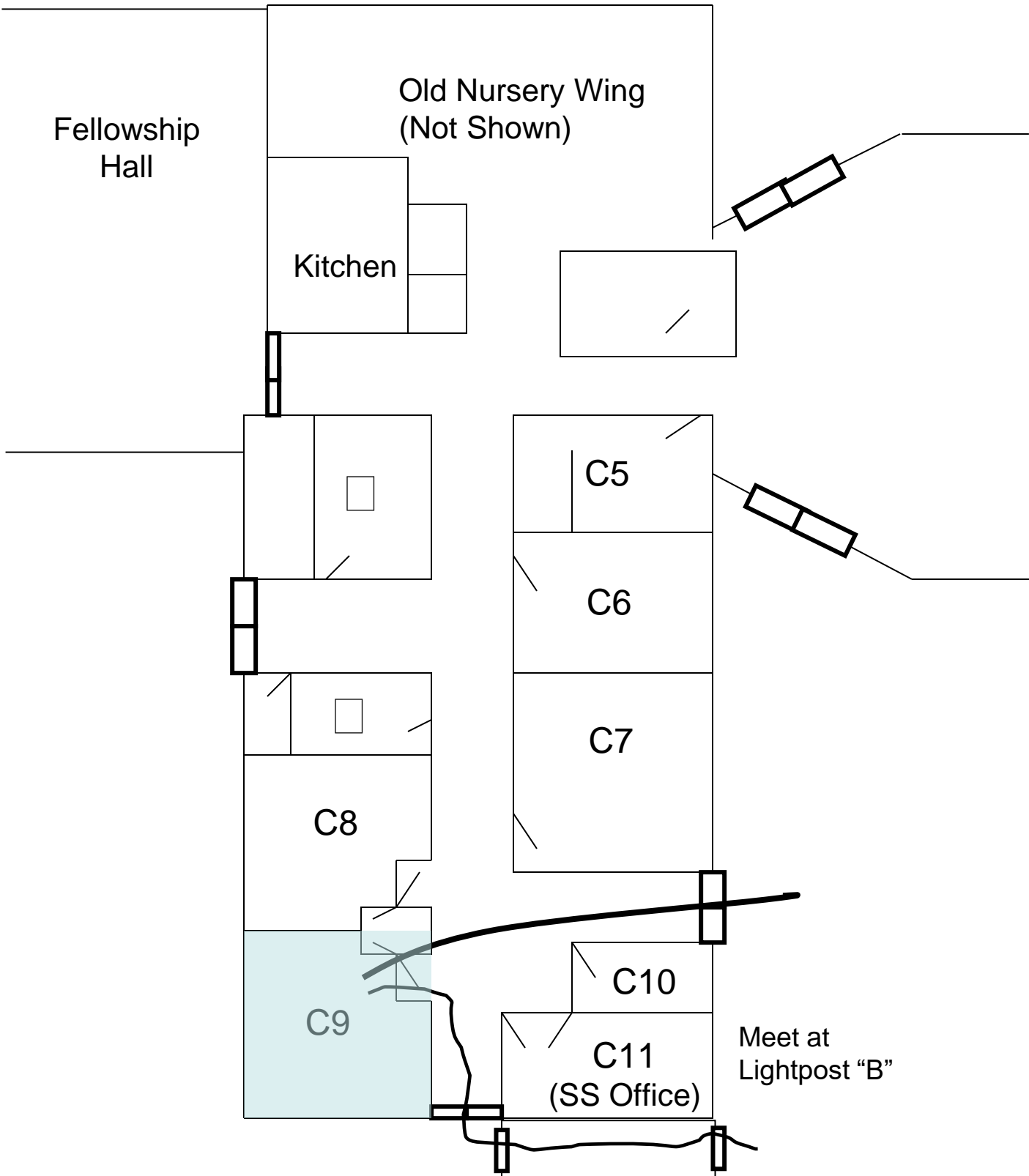
=Primary Exit Doors



= Primary Route



= Secondary Route



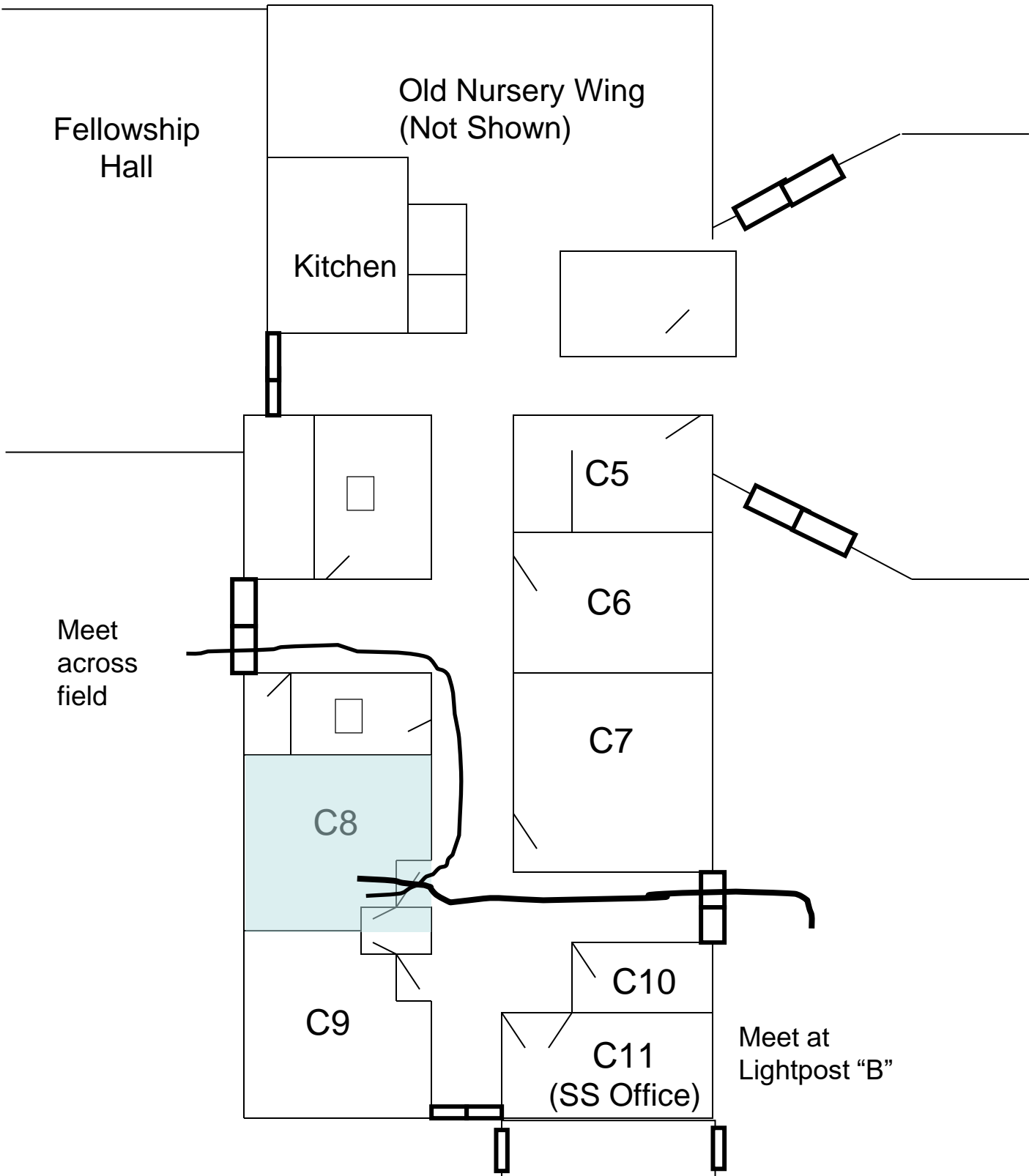
=Primary Exit Doors



= Primary Route



= Secondary Route



=Primary Exit Doors

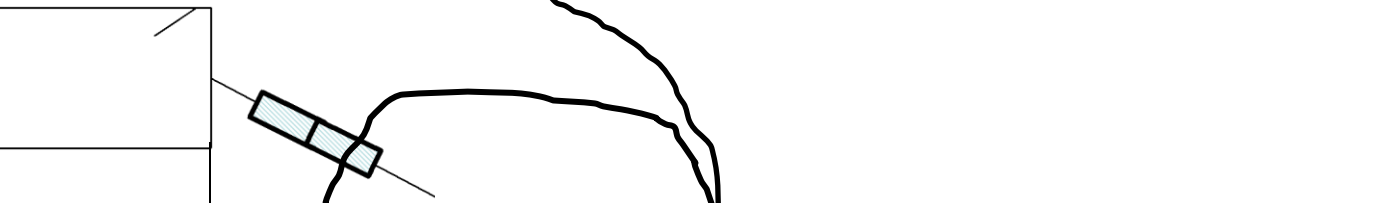
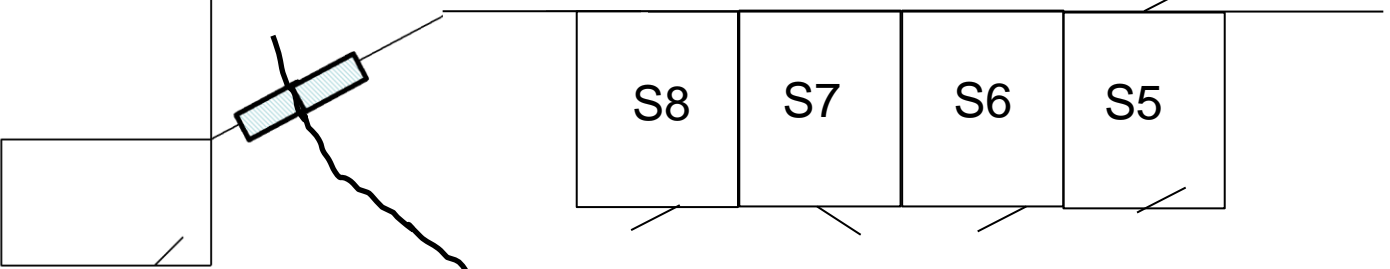


= Primary Route

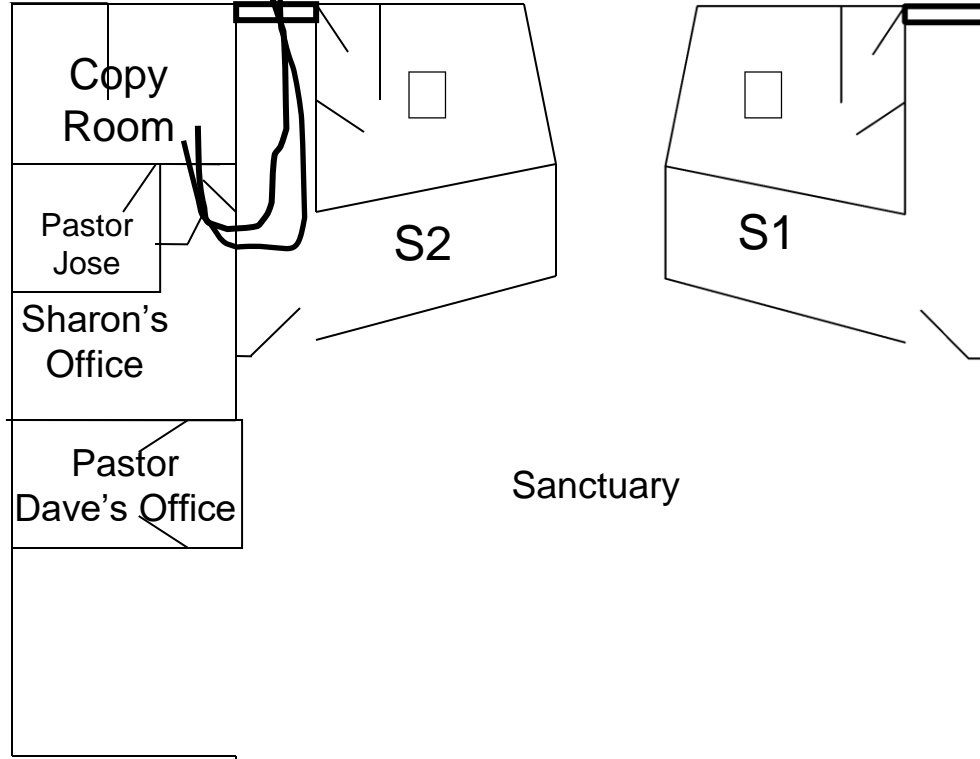


= Secondary Route


Meet at
Lightpost "D"





Meet at
Lightpost "C"



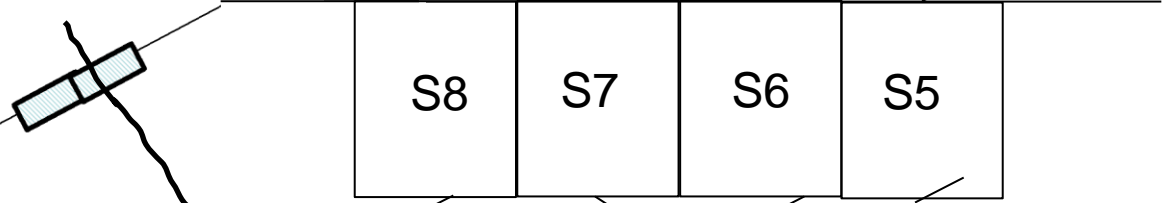
Sanctuary

 = Primary Exit Doors

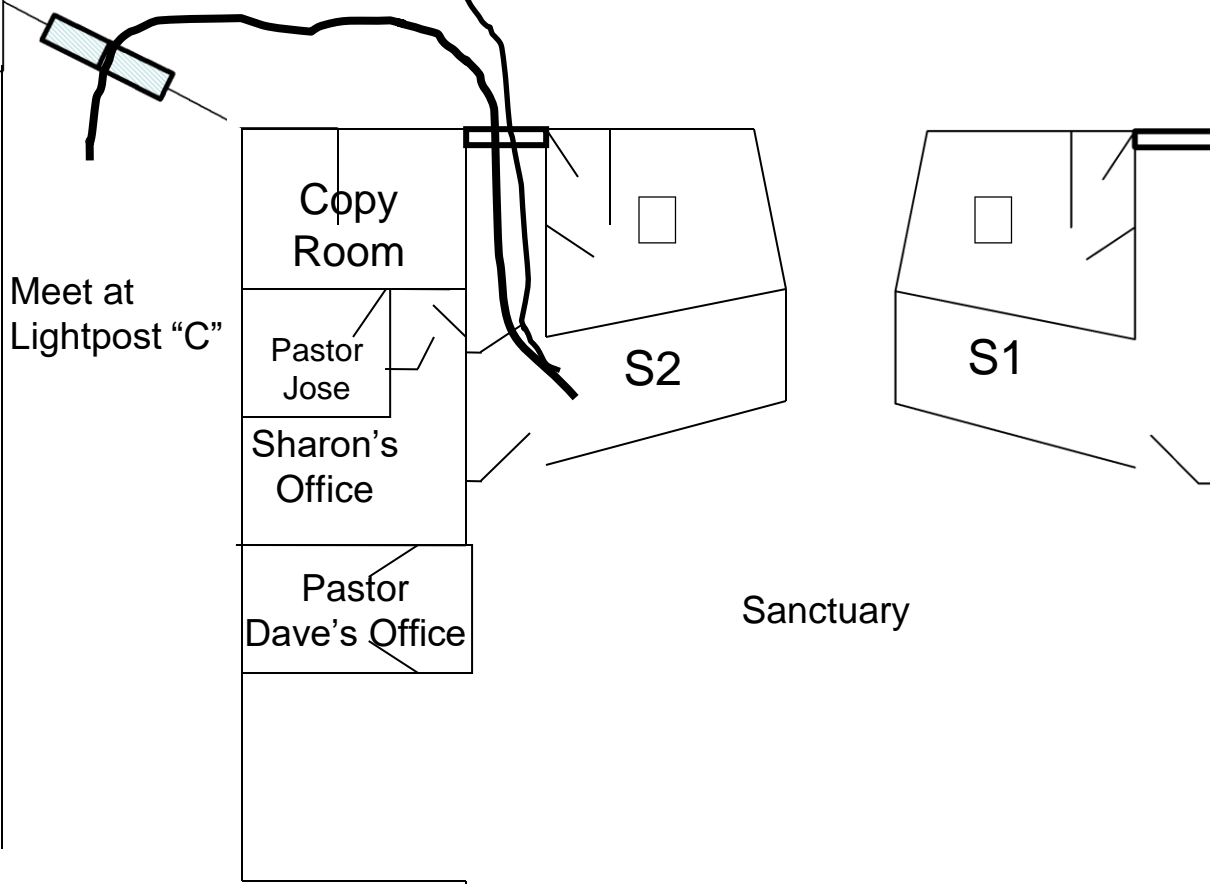
 = Primary Route


 = Secondary Route


Meet at
Lightpost "D"




Meet at
Lightpost "C"



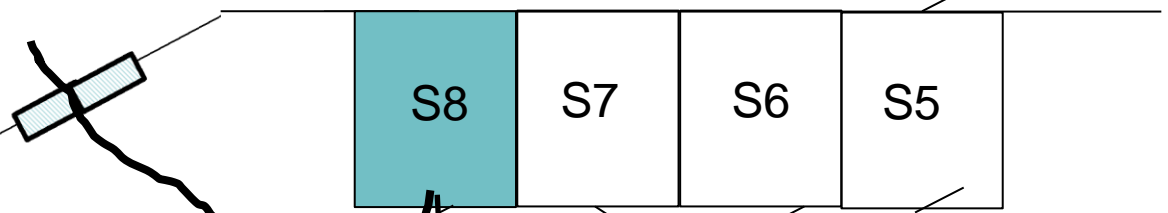
 = Primary Exit Doors

 = Primary Route

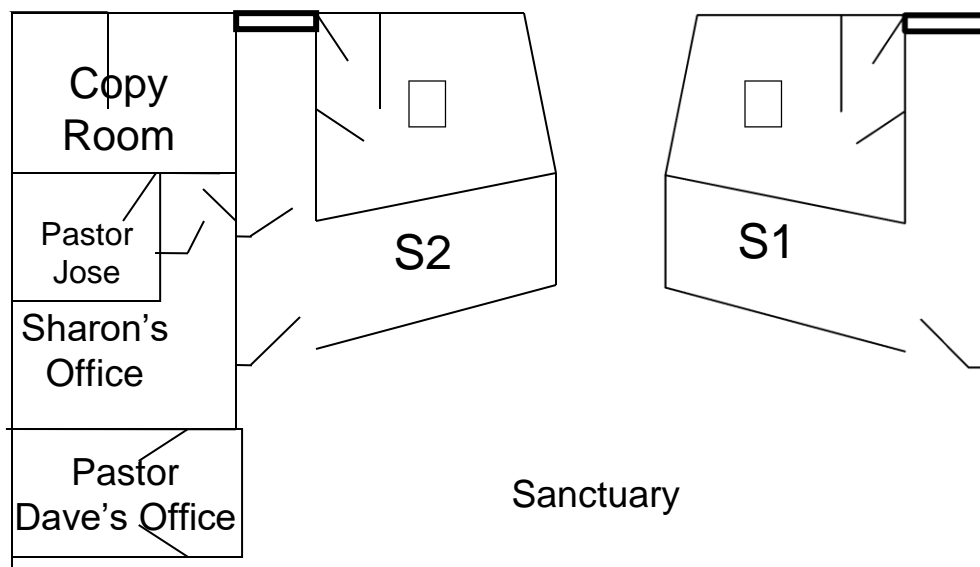
 = Secondary Route

Sanctuary


Meet at
Lightpost "D"





Meet at
Lightpost "C"



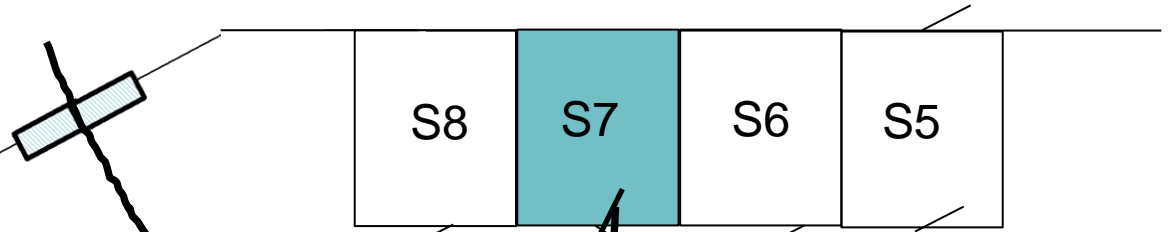
Sanctuary

 = Primary Exit Doors

 = Primary Route

 = Secondary Route

Meet at
Lightpost "D"



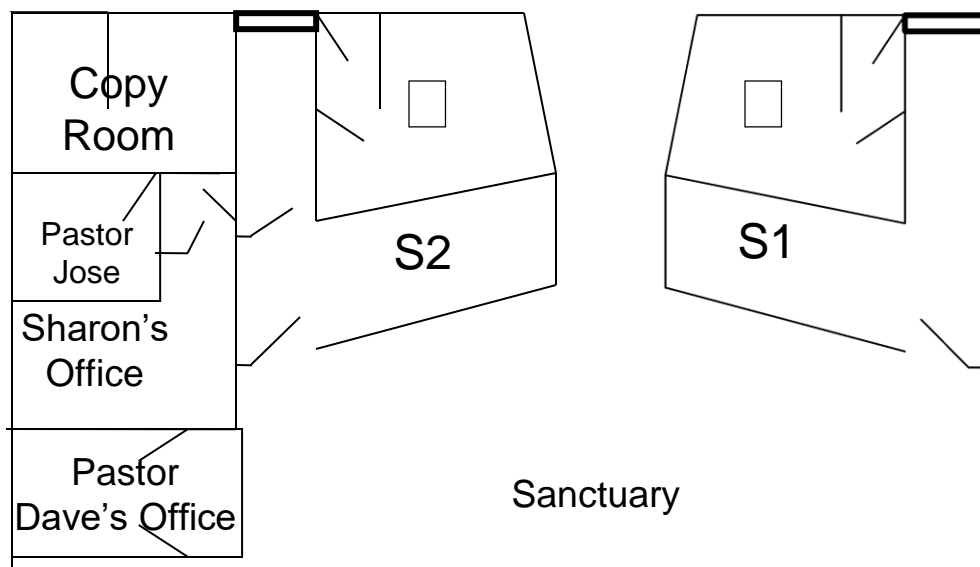
S8

S7

S6

S5

Meet at
Lightpost "C"



Copy
Room

Pastor
Jose

Sharon's
Office

Pastor
Dave's
Office

S2

S1

Sanctuary



=Primary Exit Doors

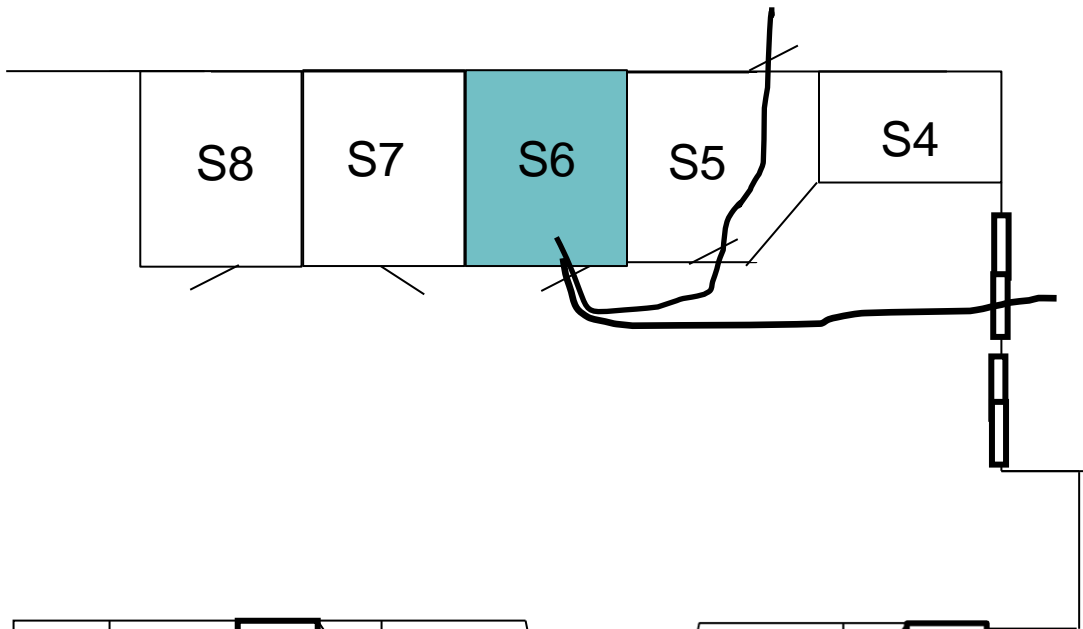


= Primary Route

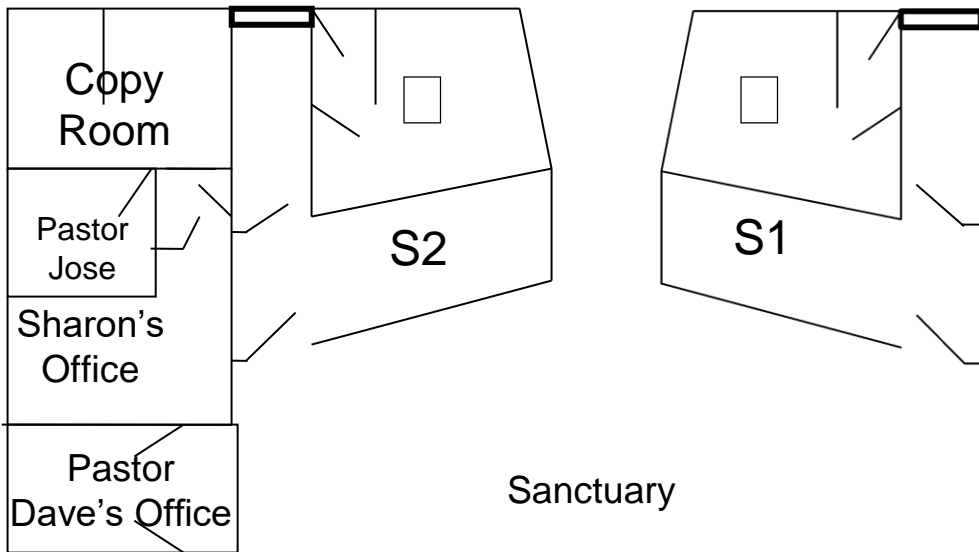


= Secondary Route

Meet at
Lightpost "D"



Meet at
Lightpost "A"



=Primary Exit Doors

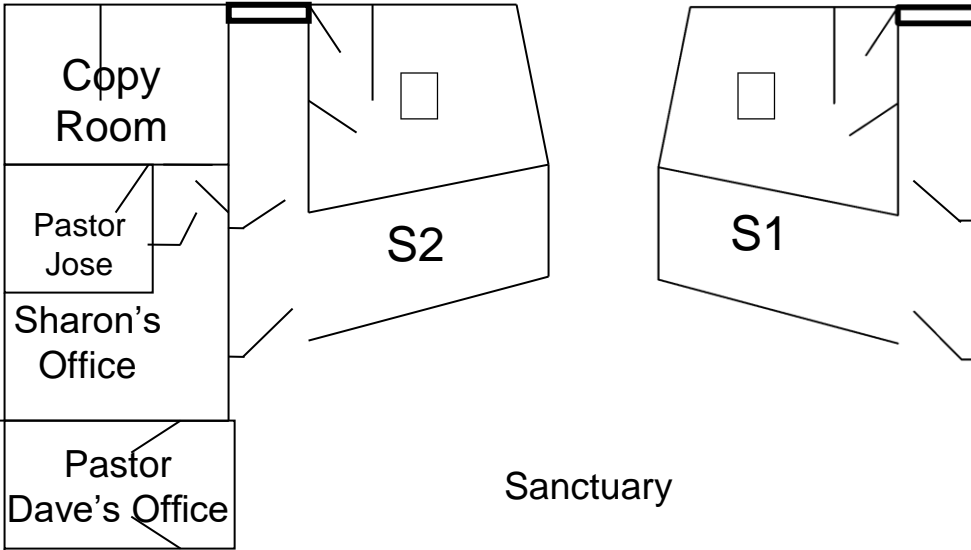
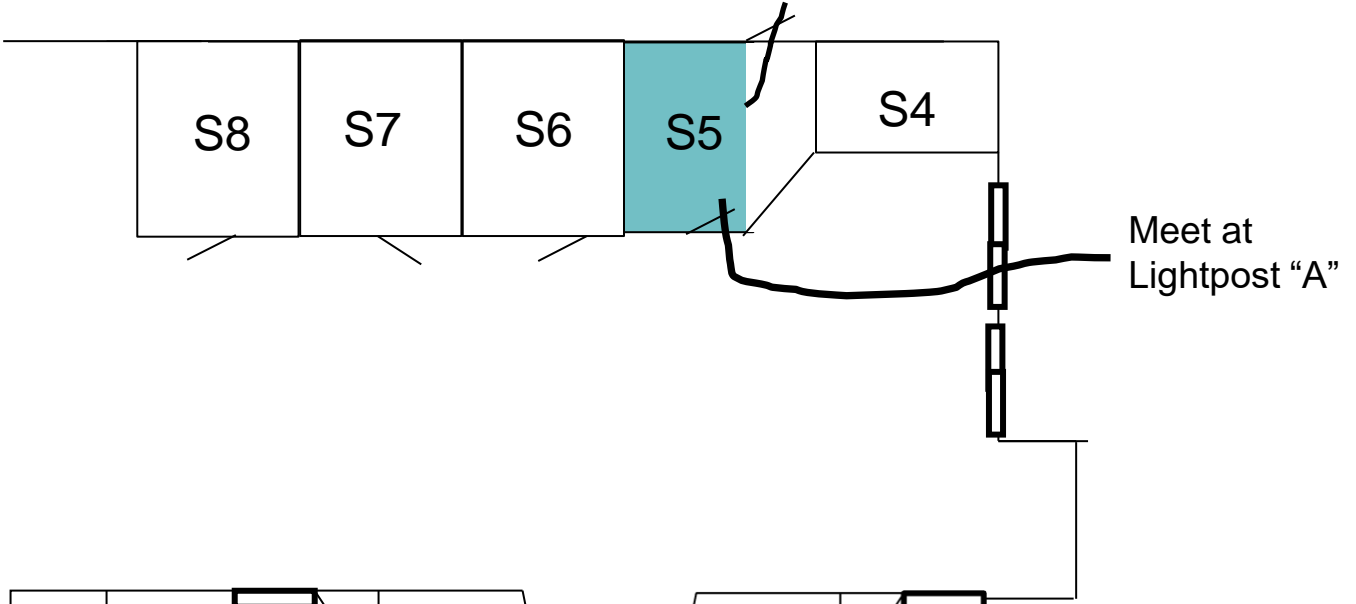



= Primary Route




= Secondary Route

Meet at
Lightpost "D"

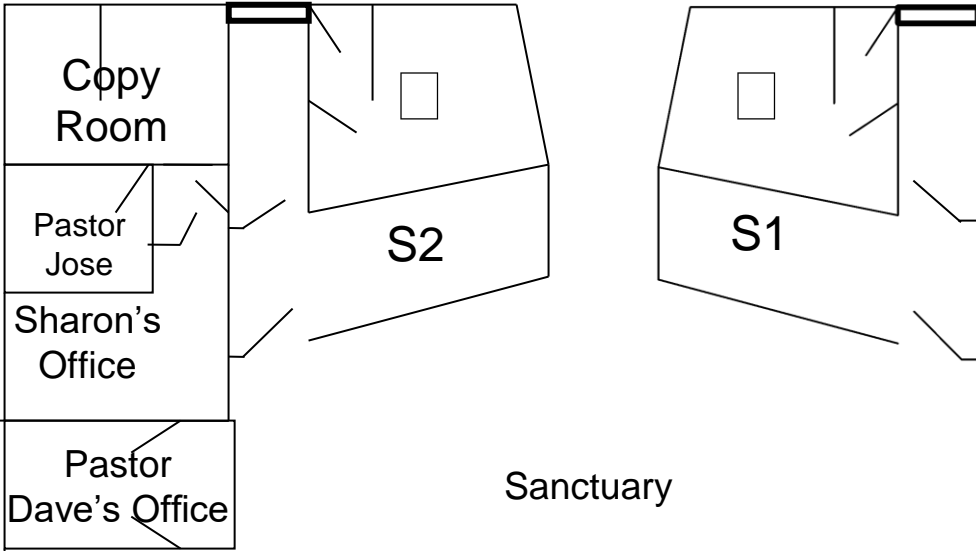
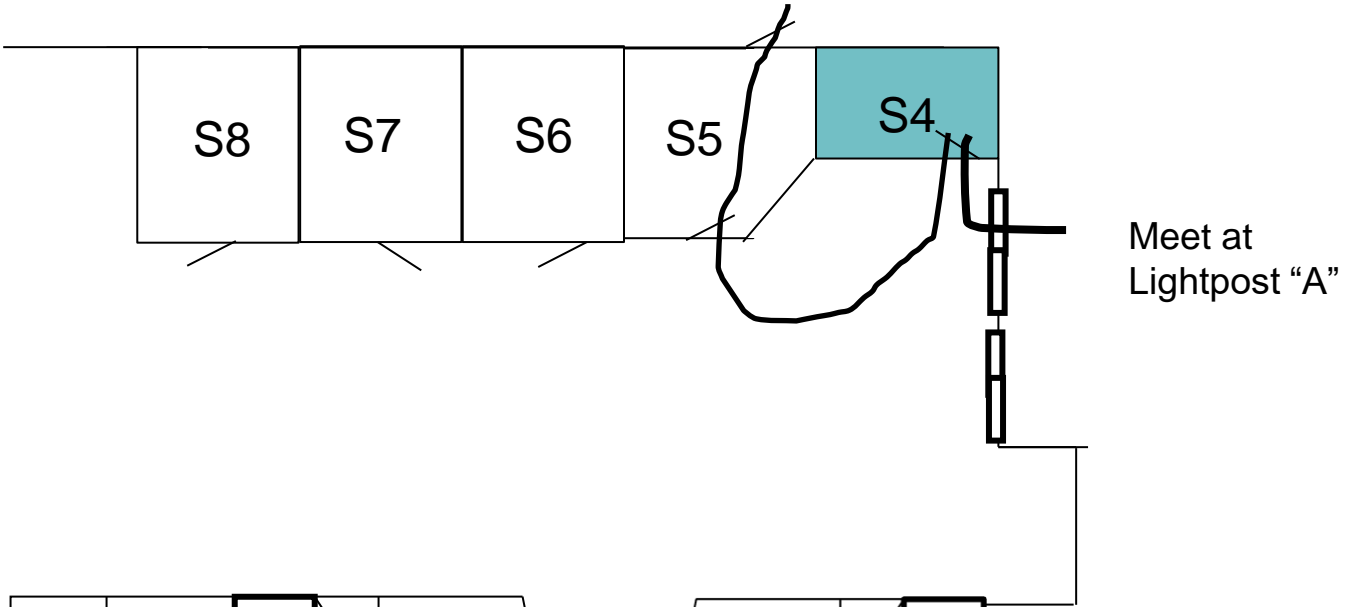


 =Primary Exit Doors

 = Primary Route

 = Secondary Route

Meet at
Lightpost "D"



=Primary Exit Doors

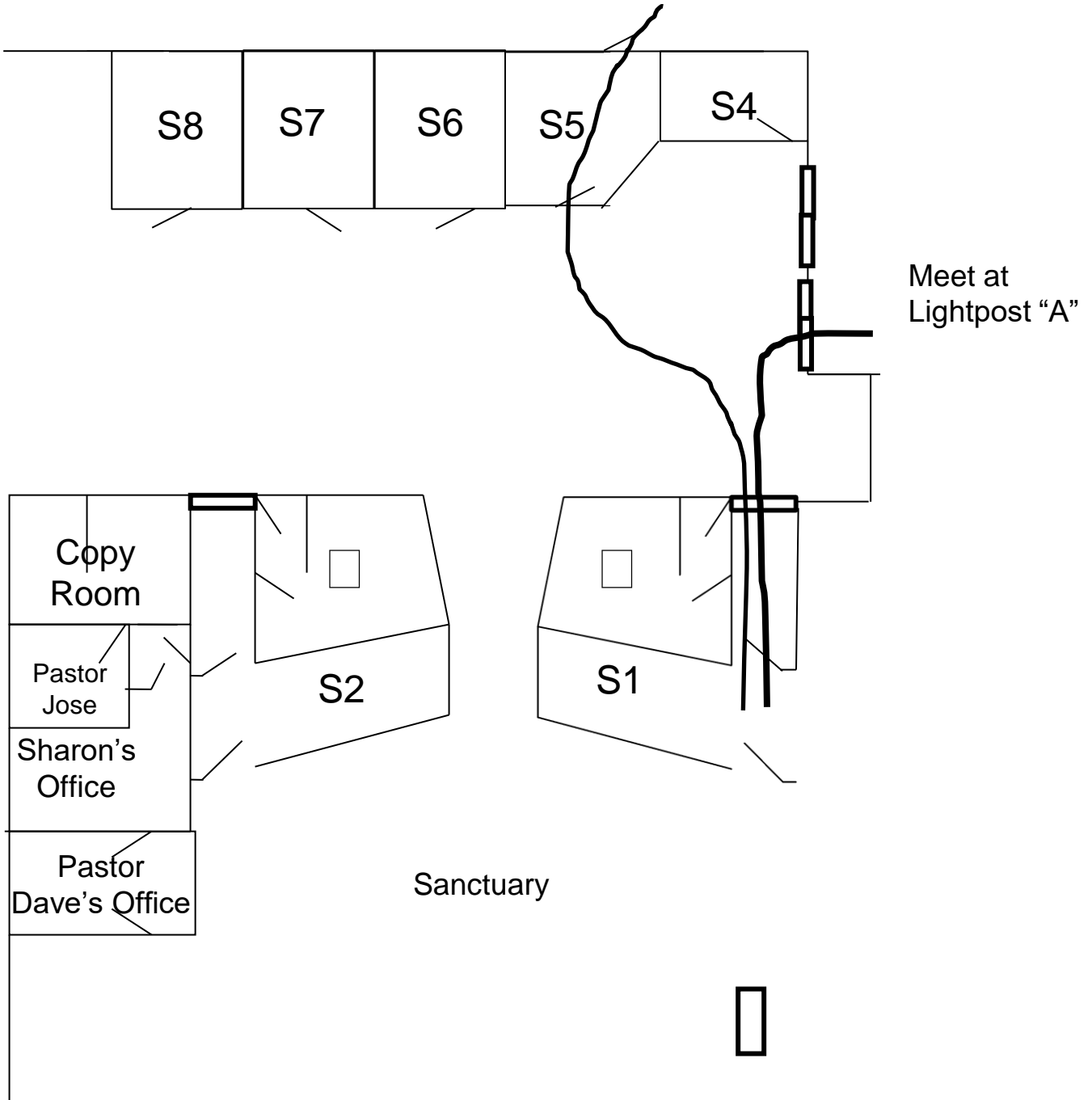


= Primary Route




= Secondary Route

Meet at
Lightpost "D"




Meet at
Lightpost "A"

Sanctuary

 =Primary Exit Doors

 = Primary Route

 = Secondary Route